

2011 East Coast GDV Intensive

Advanced Level Diagnostic Workshop

SAVE \$100

Register by
August 15th

September 22-25th

Riverton, NJ
USA



Program Schedule

9/22 AM	GDV Chakra Assessment
	GDV Screening Techniques
PM	Case Studies / Analysis
9/23 AM	Advanced Psycho-spiritual Energy Assessment
PM	Case Studies/Analysis
9/24 AM	Materials Testing Techniques
PM	Case Studies / Analysis Gala Dinner
9/25 AM	The Business of GDV Testing
PM	Final Case Studies/Analysis

Please Join Us!!!

The 2011 East Coast GDV Training Intensive promises to be more exciting and informative than ever! This year we are pleased to host BOTH GDV experts from KTI, St.Petersburg, Russia; Dr. Elena Velichko, Director of Technical Support, and Dr. Elena Yanovskaya, Managing Director and developer of many of the GDV software programs. Together, they will offer in-depth diagnostic training and analysis of GDV cases with tips and techniques for differentiating energy emissions.

Further, Mary Milroy, CEO of GDVsource & Dipl. in Esogetic Medicine, will teach techniques used for in-depth psycho-spiritual analysis based on the Mandel kirlian system.

Finally, Debra Lindh, Doctoral Candidate, MAOL and business consultant, will offer valuable insights with practical application on how to maximize the business potential of your GDV camera!

Register Online via Paypal @ www.abouthealinghands.com/events

For further information:

Contact Mary Milroy at +1-856-829-0992 or colorpuncturemary@comcast.net

Debra Lindh at +1-763-360-7073 or lindhdebra@comcast.net



Learn the latest techniques and connect with the GDV World

Meet GDV experts and users from around the world and discover how colleagues are using GDV technology in practice and research.



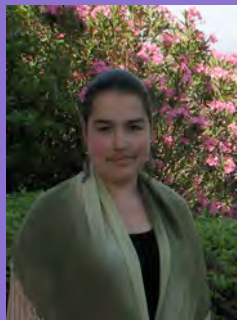
Dr. Sam Berne presents his Dolphin Research at SIS Congress 2011



Mary Milroy teaches at the 2011 GDV Workshop in St. Petersburg

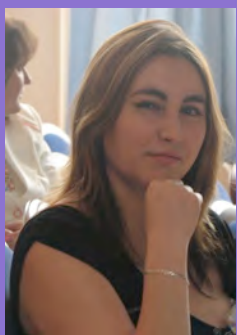
Participants from around the USA, as well as Europe and Africa will be attending this informative Intensive training* and many networking opportunities will be available. Please come prepared to share your most difficult cases, as well as the latest information regarding your research and/or practice!

* The Intensive is open to GDV camera owners and users, and is an advanced level training. Registration to the Intensive will be evaluated accordingly.



Elena Velichko, Ph.D. holds a doctorate in Computer Systems and graduate degrees in Physics and Psychology. Dr. Velichko is Director of the International Department and Director of Technical Support at Kirlionics Technologies International in St. Petersburg, Russia. She combines her backgrounds in physics, psychology, and spirit with her leading-edge practice of GDV technology.

Recognized globally for her research, Elena has published over 50 journal articles on physics, sports, medicine and biology, presented at over 18 international conferences, and has given lectures, seminars and training courses on GDV techniques in many countries around the world. Dr. Velichko is a member of the European College of Sport since 2005.



Elena Yanovskaya, is the Director General of MEDEO Company (which manages the development of new GDV Software programs and GDV diagnostics), Saint-Petersburg, Russia, since 2003. She holds graduate degrees in Physics and Psychology. Further, Elena has developed several of the GDV software programs, including the GDV Chakra and Interpretation, based on her own research. Elena has been the Chief Executive Officer of Kirlionics Technologies International company since 2008.

Recognized internationally for her software development and research, Elena has published over 30 papers about GDV investigations and has given lectures, seminars and training courses on GDV techniques science 1996. She has also been a practicing GDV interpreter since 1996 and has authored 4 additional GDV



Mary Milroy, CEO - GDVsource, B.S.I.E, Dipl. Esogetic Medicine, Dipl. Ac. & CH (NCCAOM) has combined an engineering and energy analysis background in cutting edge technology with ancient healing techniques. She is considered an expert in Esogetic Medicine (Colorpuncture & Energy Analysis). Her clinical experience includes extensive use of Kirlian and Biophotonic Imaging as a Human Energy Field assessment system.

Currently, she is working with Dr. Konstantin Korotkov and KTI of Russia to develop new devices for Psycho-Spiritual Biofield analysis and is considered one of the top experts in the field globally. Mary is an international lecturer and keynote speaker for GDV Biophotonic Imaging analysis, as well as a certified GDV teacher for KTI.



Debra Lindh, Doctoral Candidate, MAOL, CEP is an accomplished business owner and serial entrepreneur with a reputation for strategically taking businesses and business units from concept to launch. An award winning inventor, Debra holds a U.S. patent and several trademarks and applies her innovative business experience within domestic and international organizations as a strategy consultant to diagnose business problems and build and execute multi-faceted strategic plans based on business challenges and goals.

Certified in energetic practice and GDV technology, Debra continues to conduct research and look for opportunities to integrate ground-breaking and practical energetic applications into the business environment for transformation at the individual, group, and business unit levels, as well as throughout the organization. Debra is an international speaker on the topics of intuitive business strategy, energetic practices, and innovative entrepreneurship.

GDV Topics Include:

- ❖ Advanced analysis of GDV images
- ❖ Diagnosis and interpretation of images
- ❖ Case Study Analysis (bringing together Level 1 & 2 training)
- ❖ Peer-to-Peer Learning including:
 - ❖ Individual images
 - ❖ Case Studies
- ❖ Sharing findings and knowledge
- ❖ Printing and file sharing tips
- ❖ Common misconceptions/errors
- ❖ Common terms and their meanings
- ❖ Challenges and opportunities in GDV
- ❖ Participant feedback on the future of GDV trainings

The Business of GDV...

- ❖ GDV business strategy overview – Defining the ‘what’ that leads to the ‘how.’
- ❖ Elements of strategic planning models
- ❖ Differences between traditional and entrepreneurial business strategic planning
- ❖ Highlight skills and competencies for GDV success
- ❖ Examine successful models – Blue Ocean and others
- ❖ Strategy building exercise: MacGyver
- ❖ Get yourself unstuck in your GDV business strategy
- ❖ GDV business marketing & social media
- ❖ GDV research: methods, methodologies, data analysis & synthesis of data
- ❖ Publications & abstracts
- ❖ Public speaking & presentations



2011 East Coast GDV Intensive

DATE: September 22-25, 2011 (9:30am – 6pm)

COST: Early Bird Registration Until August 15th - \$650
Registration August 16th and later - \$750

PAYMENT: Payment can be made online through Paypal or credit card at:
www.abouthealinghands.com/events and press “Buy Now”.



LOCATION: The Riverton Porch Club
4th & Howard Streets
Riverton, New Jersey, USA 08077



Riverton is a beautiful Victorian town on the Delaware River, less than 10 minutes from center city Philadelphia.

FLIGHTS: Riverton is located 25 minutes from Philadelphia International Airport (PHL). Airport transportation is available through Rapid Rover +1-856-428-1500 www.rapidrover.com

LODGING: **The Riverline Inn (+1-609-941-9198)** (Bed & Breakfast within walking of class)

Broad St. Riverton, NJ 08077

www.1875riverlineinn.com

Sleep Inn (+1-856-829-0717) (reasonable rates within 1.5 miles of the class)

Rt. 130, Cinnaminson, NJ 08077

www.sleepinn.com

Wyndham Inn Suites (+1-856-234-7000) (Suites)

Rt. 73N, Mt. Laurel, NJ 08054

<http://www.wyndham.com/hotels/PHLMT/guestrooms/main.wnt>